



SPECTACULAR OFFICE SUITES IN THE HEART OF ARMADALE

Leased

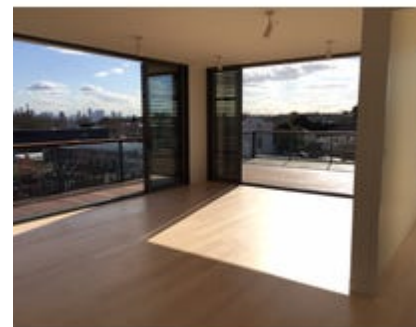
Leased: Wed 09-Dec-20

Offices • Medical/Consulting

Suite 302, 40 Seymour Avenue, Armadale, Vic 3143

Floor Area:

53 m²



Property Description

- **PRIME LOCATION**
- **FANTASTIC VIEWS**
- **MODERN BUILDING**

* Fantastic penthouse level executive office/home office suite of 53 sqm*
* Perfectly positioned, perched above the heart of High Street, Armadale
* Benefiting from 2 wonderful entertaining decks totalling 27 sqm*
* Sweeping views of the bay, CBD, the Dandenong's and the magnificent heritage rooftops of Armadale and beyond.
* Situated close to a plethora of quality retailers service providers and cafes in the heart of Armadale's major activity centre
* Well serviced by public transport

FOR AN IMMEDIATE INSPECTION, CALL US TODAY!

*Approx.

Suite 302, 40 Seymour Avenue, Armadale, Vic 3143



Grant Cohen
0418175003

The Block Arcade - MELBOURNE
280 - 292 Collins Street, Melbourne
Vic 3000



Patrick Kerr
0451 142 791

Allard Shelton Pty Ltd - Melbourne
Level 3, 267 Collins Street, Melbourne Vic 3000

Joseph Walton
0417 309 347