



Office / Showroom / Warehouse

Leased

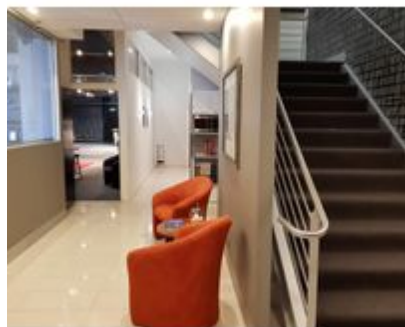
Leased: Wed 29-May-19

Industrial/Warehouse • Showrooms/Bulky Goods • Offices

Lorimer Place Business Park, Unit C5, 28 Rogers Street, Port Melbourne, Vic 3207

Floor Area:

427 m²



Property Description

- First floor office of 140.73m²
- Ground floor showroom / warehouse of 286.32m²

This two level office / showroom / warehouse has an immaculate fitout in place with no expense spared.

The first floor is made up of two smarty partitioned offices with large windows looking down over the showroom below. There is also a board room and amenities. On the ground floor is an air conditioned and heated, light filled, modern, showroom with polished concrete floors, bar, entertainment system and extensive bathrooms with shower. The rear high clearance warehouse has an inbuilt car hoist, hydraulic mezzanine and container height roller door.

Features Include:

- Immaculate fitout in place
- State-of-the-art security system
- Inbuilt car hoist
- Entertainment System
- Hydraulic mezzanine that holds a car trailer
- Air conditioned and heated showroom
- 3 phase power
- 6 Car spaces attached

Additional Details

Tenure Type
Vacant Possession

Car Spaces
6

Zoning
Capital City Zone

Parking Comments
6 car parks

Lorimer Place Business Park, Unit C5, 28 Rogers Street, Port Melbourne, Vic 3207

LEMONBAXTER

Chris Chartres
0439 399 220

Ben Hackworthy
0431 684 917

Lemon Baxter - South Melbourne
200 Wells Street, South Melbourne Vic 3205