



Architecturally designed secure office space

Leased

Leased: Mon 13-Jul-20

Offices • Medical/Consulting

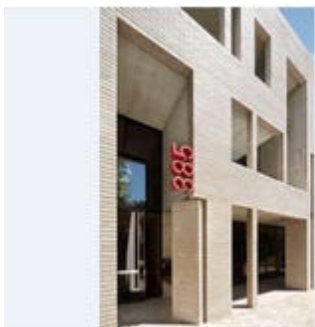
G.02/385 Sydney Road, Balgowlah, NSW 2093

Floor Area:

50 m²

Land Area:

50.00 m² (approx)



Property Description

50sqm of internal space approx

Designed by renowned architect William Smart from Smart Design Studio

Quality finishes throughout with full kitchen / breakout areas

configured with 1 office and open plan working space

secure building

Modern lobby

Great amenities with Zeus Street Greek at the front and across from Stockland Totem development with fitness first, Coles, Vintage Cellars, CBA, Westpac and many more great retailers



Steffan Ippolito

0403 347 111

Justin Lokmer

0433 259 095

IB Property - SURRY HILLS

Suite 5.01/10-14 Waterloo St, Surry Hills NSW 2010