



## Ground floor Showroom/Office in Redfern's most sought after street

Leased

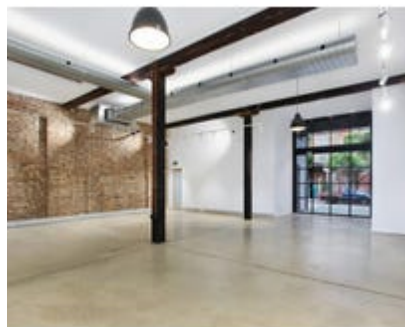
Leased: Mon 16-May-22

Offices

45-49 George Street, Redfern, NSW 2016

**Floor Area:**

190 m<sup>2</sup>



## Property Description

---

- **Showroom/Office**
- **190sqm**
- **Bi fold Glass Entrance**

A recent refurbishment in a charming boutique building located in George Street, Redfern.

Located on the corner of George & Stirling Street, Redfern, this ground floor space offers its occupant your own entrance and identity with direct street presence.

The opportunity features:

- High ceilings
- Polished concrete floors
- Refurbished kitchen
- Refurbished bathrooms
- Mezzanine storage area.

Together with;

Stunning Bi-fold front doors that will showcase your business and allow for a car to be parked inside if necessary.

State of the art multiple data and communication throughout the premise.

Reverse cycle air-conditioning, internal glass skylight.

Secure intercom and swipe key access with new alarm system ready to activate.

Making this premises the perfect canvas for creative showroom or office space, marketing/design/PR studio, destination retail or architectural/media/ IT agencies.

...

45-49 George Street, Redfern, NSW 2016



**Will Dawson**  
0499102034

**Shane Blackett**  
0410 093 392

---

**IB Property**

Suite 5.01/10-14 Waterloo St, Surry Hills NSW 2010