



High quality suburban office space

Leased

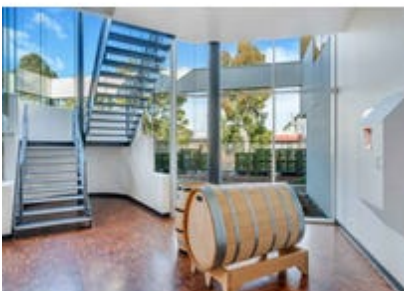
Leased: Wed 18-Nov-20

Offices • Industrial/Warehouse • Other

27 Tikalara Street, Regency Park, SA 5010

Floor Area:

413 m²



Property Description

27 Tikalara Street presents as an excellent suburban office option for those wanting high quality office accommodation at a fraction of the price. The available tenancy on the first floor offers extensive glazing to three sides and is undergoing extensive refurbishment with new carpet tiles and a fresh repaint in a colour of the tenants choosing. The site has an abundance of car parking, enough to cater for all staff and any visiting clients.

27 Tikalara Street is located in the thriving suburb of Regency Park, approximately 10km from the CBD. Nestled amongst many national and international occupiers, the site provides unmatched access to both the CBD and northern suburbs.

For more information please contact one of the exclusive JLL leasing agents.

JLL
RLA1842

Additional Details

Building
Partial

Tenure Type
Vacant Possession

27 Tikalara Street, Regency Park, SA 5010



Hamish Crouch
0433278821

Patrick Bush
0409 938 795

JLL - Adelaide
25 Grenfell Street, Adelaide SA 5000