



LIVE, WORK AND PLAY

Offices • Showrooms/Bulky Goods • Other

Unit 2, 5 Rose Street, Hawthorn East, Vic 3123

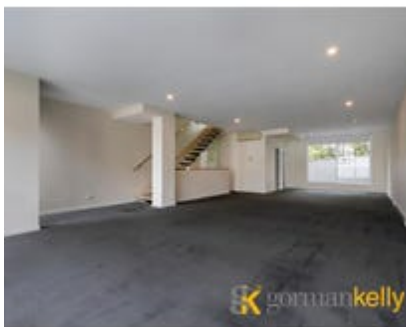
Floor Area:

198 m²

Sold

Contact Agent

Sold: Thu 29-Apr-21



Property Description

- **Area: 198sqm**
- **2 Car-Spaces**
- **Versatile Space**

GormanKelly is pleased to offer Unit 2, 5 Rose Street, Hawthorn East for Auction on Thursday 29th April 2021 at 12 noon.

This exceptional opportunity exists to secure a three-level architecturally designed office/townhouse overlooking extensive parkland and providing utmost flexibility for a living/working arrangement.

- 210 sqm over 3 levels
- Incorporating open plan office and potential to live in the upper floor as is or easily convert the whole premises to provide a spacious townhouse
- Amenities on each level and balconies front & rear
- Double carport plus garage for up to four (4) cars
- All levels have excellent natural light
- Only minutes from Camberwell Junction and public transport

For further details or to arrange an inspection, please contact Nick Breheny or Gerry Gleeson today!

VIRTUAL TOUR: <https://my.matterport.com/show/?m=CNpTAGYYM7w>

Located between Camberwell and Riversdale Roads, close to Camberwell Junction retail amenity as well as trams on Riversdale Road and Burke Road.

200m from Fritsch Holzer Park and 600m from Camberwell Train Station.

Additional Details

Tenure Type Vacant Possession	Car Spaces 6
Zoning Commercial 1	Parking Comments Up 2 6 cars

Unit 2, 5 Rose Street, Hawthorn East, Vic 3123



Gerry Gleeson
0402 443 546

Nick Breheny
0411 601 730

GormanKelly - Hawthorn
1 Oxley Road, Hawthorn Vic 3122