



## PREMIUM LOCATION | MACQUARIE STREET FRONTAGE | ABUNDANCE OF ...

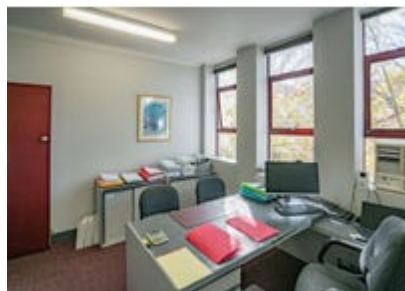
For Sale  
Contact Agent  
Auction

Offices • Other • Medical/Consulting

Suite 305/195 Macquarie Street, Sydney, NSW 2000

### Floor Area:

53 m<sup>2</sup>



## Property Description

---

JLL is pleased to offer Suite 305, 195 Macquarie Street to the market For Sale by way of Public Auction.

195 Macquarie Street stands prominently as a premium location on Macquarie Street just moments from the world famous Martin Place and Circular Quay precincts. The suite's aspect is bathed in natural light throughout the day. With plenty of amenity nearby the property is well equipped and able to capitalise on the convenience within the area. Martin Place and Circular Quay's international reputation as a major economic destination and tourist and amenity hub means 195 Macquarie Street will have enduring demand for generations to come.

The suite is located on the third floor of Agriculture House and enjoys an abundance of natural light throughout. Suite 305 benefits from large windows on both the eastern and western aspects, air conditioning throughout each office and internal kitchen area.

Agriculture House is well positioned to capitalise on the convenience of its location including landmarks such as Supreme Court of NSW, Sydney Hospital, The Mitchell Library and Parliament of NSW.

- Exclusive Macquarie Street address
- Rare Macquarie Street frontage
- Surrounded by an array of quality restaurants & cafes
- Walking distance to Sydney's transport network
- Generous sized office bathed in natural light

Suite 305/195 Macquarie Street, Sydney is offered For Sale, via Public Auction on Thursday 20th May, 2021 at 10:30am.  
Venue - Cooley Auction Centre Sydney, Level 5, 1 Margaret Street, Sydney NSW 2000

## Additional Details

---

**Building**  
Partial

**Tenure Type**  
Vacant Possession

Suite 305/195 Macquarie Street, Sydney, NSW 2000



**Willem Watson**  
0435551559

---

**JLL - Sydney**  
Level 25, 420 George Street,  
Sydney NSW 2000