



PORTSMITH WAREHOUSE

Industrial/Warehouse

7 Bramp Close, Portsmith, Qld 4870

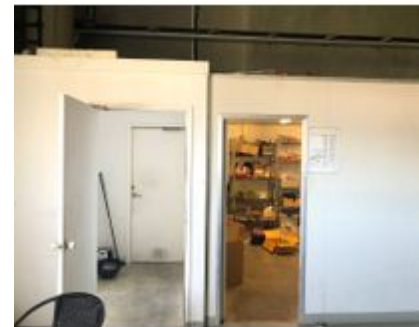
Floor Area:

402 m²

Sold

Contact Agent

Sold: Tue 20-Oct-20



Property Description

- **HIGHLY EXPOSED TO COMPORT STREET**
- **FREEZER AND COLDROOM FACILITIES**
- **CURRENT USE IS FOOD PREP & STORAGE**

+ RPD: Lot 1 on SP148627. CTR 50424045. Freehold strata. Only 2 units in complex.

+ Location: Minutes to the wharves, rail yards and next to the Southern Access Highway

+ Warehouse Area: 402m2

FEATURES:

- Dimensions: 17.2m wide x 23.5m deep x 6.6m average height
- Concrete tilt up walls
- 6m wide electric roller shutter at front
- Glass entry to small shop of 24m2 which previously sold fresh seafood
- Front office of 28m2 – airconditioned
- Own toilets
- Existing freezer room of 72m2* (in average condition)
- Existing coldroom of 15m2*
- Processing area of 45m2* previously for seafood but now being used to cook rice
- Front yard/car park area separately fenced with own crossover entry
- No shared driveways and parking for up to 10 vehicles
- CURRENTLY RENTED, however the tenant will vacate
- Property offered for sale with vacant possession

Additional Details

Building
Partial

Tenure Type
Vacant Possession

Parking Comments
10

7 Bramp Close, Portsmith, Qld 4870



Danny Betros
0418772049

CBRE - Cairns
1st Floor, Village Lane, 20 Lake Street, Cairns City Qld...